

CAMBODIA PROJECT

The Project for Expansion of Electricity Supply Facilities in Siem Reap



- * Facilities : 3 sets of 3500kW Diesel Generator and 6.6/22kV Substation
- * Finance : Japanese Grant Aid
- * Client : Electricite Du Cambodge (EDC)
- * Completion : February, 2004

This New Power Station drastically improves Energy Feeding Situation in the touristic city, Siem Reap, Kingdom of Cambodia.

- * Less Interruption
- * Low Cost
- * Stable Supply



AICHI's Switchgears

- * 22kV Switchgears
- * 6.6kV Switchgears
- * Control Center

AICHI'S Power Engineering

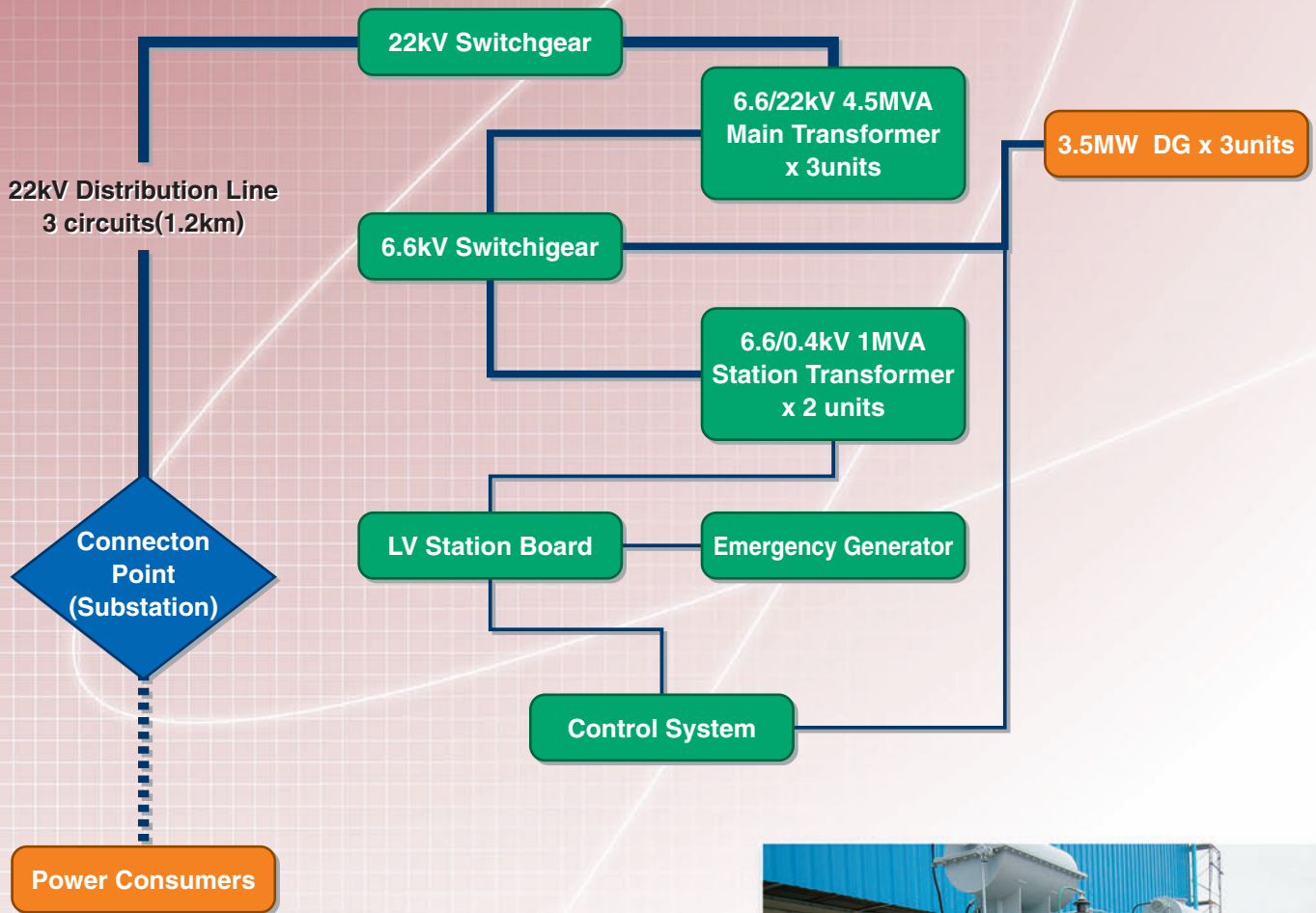
- * Engine/Generator Auxiliary Power and Control System
- * 6.6/22kV Substation System (including Transformers, Switchgears)
- * 22kV Underground Distribution Line Construction



▲ Switchgear Installation



◀ 22kV Cable Installation for Distribution



AICHI's Transformers

- * 3 units of 4500kVA Main Transformers
- * 2 units of 1000kVA Station Transformers

